

# RasPiBox Zero

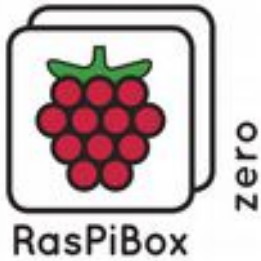
## Cap rail enclosure set for Raspberry Pi Zero

---



### Features enclosure and pcb:

- milled **cap rail enclosure** (3 modules)
- for EN50022 DIN rails
- Integrated **5V/1A voltage regulator** ( $V_{in}$  9...35V DC)
- Integrated **4 port USB Hub**
- Integrated **prototyping area**
- 2x 2-pin terminal blocks for prototyping
- Marked GPIO (I2C, SPI, UART) & power pins beside the proto area
- 1x 2-pin terminal block for power supply
- **for Raspberry Pi Zero only**
- Vented cover to allow through air flow



# RasPiBox Zero

## Cap rail enclosure set for Raspberry Pi Zero

---

### Enclosure:

- Outside dimensions: 53,5mm x 90mm x 58mm (W x H x D)
- Breadboard area: 27mm x 27mm (W x H)
- Material: Polycarbonate UL 94 V-0
- Finish top shell: RAL 7035 light grey
- Finish bottom shell: RAL 7016 anthracite grey

### Features optional voltage regulator:

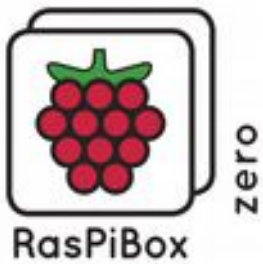
- Input voltage: 15 – 30V DC
- Output voltage: 5V / 1A DC

### Part number table:

Description	Part-No.
pcb only (without enclosure)	RasPiBox Zero Basic
Pcb and milled enclosure	RasPiBox Zero Standard

### Applications :

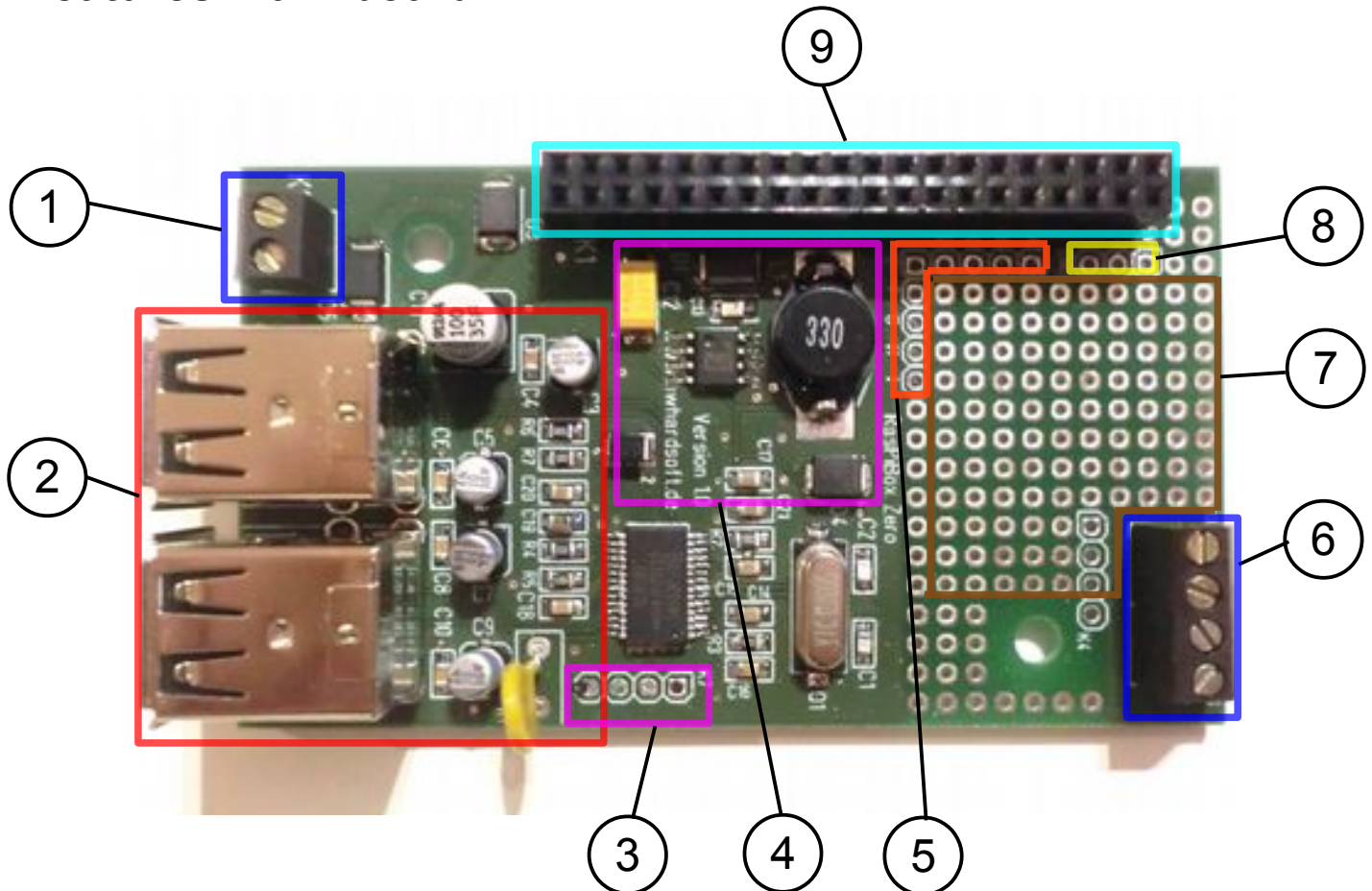
- Home automation
- Industrial control
- Door access and door control
- Temperature controls
- Education
- Internet of Things (IoT)



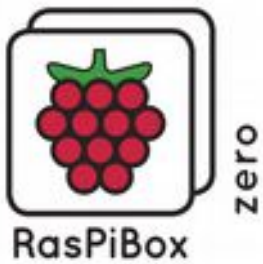
# RasPiBox Zero

## Cap rail enclosure set for Raspberry Pi Zero

### Features main board:



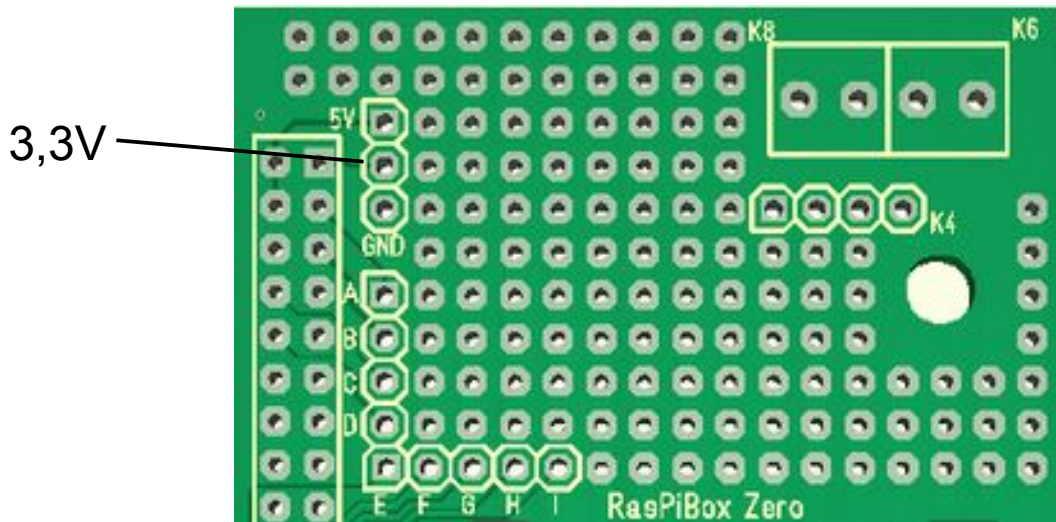
- ① Terminals power supply
- ② USB hub
- ③ USB cable to Raspberry Pi Zero
- ④ voltage regulator
- ⑤ GPIO (UART, SPI, I2C) pins for proto board
- ⑥ Terminals for proto board
- ⑦ Breadboard / proto board area
- ⑧ Power pins (5V, 3,3V, GND) for proto board
- ⑨ Header for Raspberry Pi Zero



# RasPiBox Zero

## Cap rail enclosure set for Raspberry Pi Zero

Pin marking protoboard:



Pin	Raspberry Pi	Function
A	GPIO2	SDA (I2C)
B	GPIO3	SCL (I2C)
C	GPIO14	TX (UART)
D	GPIO15	RX (UART)
E	GPIO8	CE0 (SPI)
F	GPIO7	CE1 (SPI)
G	GPIO10	MOSI (SPI)
H	GPIO9	MISO (SPI)
I	GPIO11	SCK (SPI)